

### From Airport

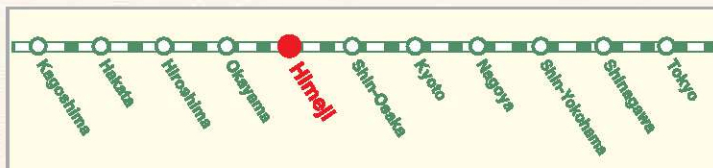
**Osaka International Airport (Itami Airport)**  
 ... 1h 20min  
 by airport limousine (12round trip / day)

**Kansai International Airport**  
 ... 2h 10min  
 by airport limousine

**Kobe Airport**  
 ... 1h by port liner and JR (Special Rapid Service)

### JR Shinkansen

(From major cities)  
 (By Nozomi)



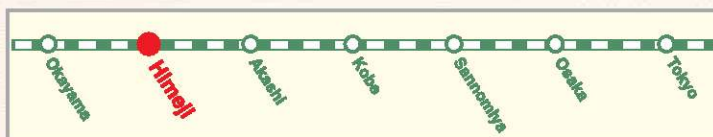
Tokyo	3h 10min	Shin-Kobe	16 min
Shin-Yokohama	2h 45min	Okayama	20 min
Nagoya	1h 20min	Hiroshima	1h
Kyoto	45 min	Hakata	2h 10min by Sakura
Shin-Osaka	30 min	Kagoshima	3h 50min by Sakura

\*Some Nozomi and Sakura don't stop at Himeji.  
 \*Almost all Hikari stop at Himeji. \*All Kodama stop at Himeji.

### JR Railway Line

(Special Rapid Service)

Kyoto	1h 32min
Osaka	1h
Sannomiya	39 min



## Himeji Convention & Visitors Bureau

Honmachi, Himeji Hyogo 670-0012 JAPAN  
 TEL: +81-79-222-2285 FAX: +81-79-222-2410  
<http://www.himeji-kanko.jp/en/>



# Himeji 姫路





# —STANDARD HIMEJI TOUR COURSE—

The standard course takes you to the popular tourist spots in Himeji including the oldest and most beautiful existing castle, "Himeji Castle", "Kokoen" with a beautiful Japanese garden, and "Shoshazan Engyoji" with 1000 years of history.

## 1 STARTING AT JR HIMEJI STATION



Strolling...enjoying the town scape while looking at the castle, or go through existing smart area



Himeji Castle Loop bus



Otemae street Miyuki street

It is very recommendable with 1000 yen to go around Himeji in a retro style bus.



## 2 THE WORLD HERITAGE SITE, HIMEJI CASTLE

3 hours

Himeji Castle has 400 years of history. It is evaluated highly from the world as a castle that is still the original building among Japanese castles. The castle walls are painted with white wall plaster and the beauty of the castle tower is magnificent. You are sure to be impressed by its appearance. Please note you cannot enter the Mainkeep until March 26, 2015 (Other areas are open to public).



### Early Opening

The castle usually opens at 9:00 a.m. However, it will open up to one hour earlier on the following days as some congestion is expected.

March 27 to April 12	Open at 8:00 a.m.
April 13 to 28	Open at 8:30 a.m.
April 29 to May 10	Open at 8:00 a.m.

About Himeji Castle



**Hours:** September 1st to April 26th/ 9:00 to 16:00 (Gate closes at 17:00)  
April 27th to August 31st /9:00 to 17:00 (Gate closes at 18:00)  
**Fee:** ¥1,000 for adults (over 18 years old), ¥300 for elementary school to high school students, free for children before elementary school.  
\*common ticket for Himeji Castle and Kokoen  
¥1,040 for adults, ¥360 for elementary school to high school students.  
**Closed days:** December 28th and 30th

### Enjoy Visiting Himeji Castle in a New Way!

A new way of enjoying the castle will be introduced to coincide with the grand opening. Hold your smart phone or tablet over the indicated spots inside the castle and the AR (Augmented Reality) technology allows you to watch computer graphics reproductions of no longer existing buildings, an enactment of the life inside the castle, and an explanation about the defensive structure. Wi-Fi is not fully equipped at some places in the premises due to the geographical conditions. Utilization of your device may be limited depending on the congestion right after the grand opening.



This Japanese garden with Himeji Castle in the background makes you feel like you have time traveled to the Edo period. The seasonal flowers are great. The tea ceremony experience in tea room is popular too.

## 3 KOKOEN GARDENS

1 hours



Take a bus from the route 8 to "Shosha Ropeway" from the bus stop in Chawadort and get off at the last stop.



Bus 30 minutes



**Hours:** 9:00-17:00 (must enter by 16:30)  
\*Extended closing time for one hour in April 27 - August 31  
**Fee:** 300 yen/adult 150 yen/elementary and junior high school student

## 4 MT. SHOSHA ENGYOJI TEMPLE

3 hours

You can see the whole city from the ropeway and the view is impressive! It has 1000 years of history and important cultural properties are located in the quiet mountain. Experiencing "Sutra writing, Zen meditation, and one-day training" in an area with rich greenery is very popular. It is famous as a filming location for the Hollywood movie, "Last Samurai", starring Tom Cruz, and various movies and dramas.



Bus 30 minutes

Enjoy 4 minutes of stroll in the air.



**Hours:** 8:30 to 17:00 (Winter) 8:30 to 18:00 (Spring to Fall, it may be extended on Sundays and holidays)  
**Fee:** \*Entrance fee: ¥500  
\*Special entrance fee: ¥1,000 (including microbus)  
**Closed days:** Ropeway is closed for periodical inspection in December (about a two week)

## 5 GET OFF AT JR HIMEJI STATION





## DOWNTOWN MAP

LEGEND
View spot
Restaurant
Shrine
Toilet
Hotel
Free Wifi
Bank (ATM)
Coin Locker
Convenience Stores
Bus Stop
Loop Bus
Post Office
Rental Cycle
Police Station

## Himeji City Museum of Art

The red brick building is registered as a tangible cultural property. It used to be a storage house for the old army and now it is a museum. There are statues in the grass yard and you can relax and enjoy the art. In the normal exhibit, many modern French artists, such as Monet and Mathis, are on display and various special exhibits are held throughout the year.

## Himeji City Museum of Literature



It is located in a quiet area. The unique concrete building designed by Tadao Ando will jump up in your sight. Using visuals and graphics, they reveal the world of literature in a brand new way. "Bokeitei" is a Japanese style building with a Japanese room and a tea room and was built in Taisho period. It is highly recommended. The observatory on the north building is great.



## Hyogo prefectural Museum of History

This museum has exhibits that shows the history and culture of Hyogo. It is next to Himeji Castle and you can see Himeji Castle from the museum. There are many exhibits about Himeji Castle and the castle town, such as a detailed replica of Himeji Castle in the lobby and a virtual reality theater. You can try on twelve-layered ceremonial kimonos or armor (3 times a day, each is drawn in a lottery).

## Amusement

It is a theme park with a safari park, amusement park, swimming pools, and skating rink. It has a nickname of "Himesen".

In the safari park, there is a drive through safari where you can ride your own car or a bus and observe carnivores and herbivores close by from the window. You can also enjoy walking safari where you can see water fowls and kangaroos close by and sky safari where you ride a ropeway and see the animal from above.

In the amusement park, there are many rides that children can enjoy such as "Diablo", a roller coaster that you hang from the rail, "Free fall", a ride you fall straight down from 35m above, and 85m high Ferris wheel.

## OTHER

## Unique buildings

**Hours:** 10:00 to 17:00 (Last admission at 16:30)  
**Fee:** Regular exhibit: ¥200 for adults, ¥150 for high school and college students, ¥100 for elementary and junior high school students. Special exhibition: Admission fee is different for each.

**Closed days:** Monday (if it is a holiday, it is closed the next day) The end and beginning of the year (December 25th to January 5th)

**Hours:** 10:00 to 17:00 (Last admission is at 16:30)  
**Fee:** ¥300 for adults, ¥200 for college and high school students, ¥100 junior high school and elementary school \*20% discount for a group over 20 people. \*Special exhibit has different fee.

**Closed days:** Mondays (Open if it is a holiday), After a holiday (Open on Saturdays and Sundays), December 25 through January 5th

**Hours:** 10:00 to 17:00 (Last admission is at 16:30)  
**Fee:** ¥200 for adults, ¥150 for college students, ¥100 for high school students, free for junior high school students and under \*Separate fee for special exhibits

**Closed days:** Every Monday (if Monday is a holiday, it is closed the next day), the end and beginning of the year, and other special closure (please contact us for detail.)



## Himeji Central Park

**Hours:** 9:30 to 18:00 in the summer (last admission at 17:00), 10:00 to 16:30 in the winter (last admission at 15:30) \*It changes depending on the season.

**Fee:** Admission: ¥3100 for adults (junior high school student or older) ¥1900 for children (elementary school), ¥1200 for toddlers (3 years old to before entering elementary school)

\*It is for the amusement park, safari, Aquarea (swimming pool), and ice park with skate rental (skating rink)



# EXPERIENCES

Guide to activities in Himeji-city, Hyogo-prefecture. Introducing various activities, which you can enjoy in Himeji-city, such as ninja-, kimono-, and shakyo- (Japanese writing brushmanship) etc. experience.



## The Ceremony in Kokoan

Seasonal flowers are beautiful too. Tea ceremony experience in the tea room is popular.



**Open:** All year around (10:00 to 18:00)  
**Fee:** Tea ceremony ¥500 (including snack)  
 \*¥300 admission fee is necessary  
**Reservation & contact:**  
 Kokoan Soujuan TEL 079-289-4121  
 \*No reservation necessary

## Experience sutra writing: write each letter with feeling



There are 2 types, standard heart sutra course and smaller flower pedal sutra. Many difficult kanjis are lined up but don't worry, it is drafted. Write each letter of the sutra with feelings.

**Open:** All year around  
**Fee:** ¥1,000 for Heart sutra, ¥300 for flower pedal sutra  
**Reservation & contact:**  
 Mt. Shosha Engyoji temple  
 TEL 079-266-3327  
 \*No reservation necessary

## Strolling in the castle town in Kimonos



Change into kimono and walk around Himeji Castle. We recommend walking around the old townscape with good atmosphere or visit Kokoan and around the museum of art.

**Open:** All year around (10:00 to 18:00)  
**Fee:** ¥3,000 (including kimono, accessory, and dress up)  
**Reservation & contact:**  
 Jokamachi style  
 TEL 090-9979-4141  
 \*Reservation must be made prior to the day before.+

## Experience an authentic historical costume

You can transform into Princess Sen, Oiran, Ooku, a ninja, a samurai, or a military commander, so you can feel like an actor or actress. You can take beautiful pictures at the studio or stroll in a castle town of Himeji in a historical costume.

**Open:** All year around (9:00 to 18:00)  
**Fee:** From ¥5,250  
**Reservation & contact:**  
 Yumeoriyakata TEL 079-226-5277  
 \*Closed on Mondays  
 (If it is a holiday, it will be closed on the following day on Tuesday)

## Experience zen meditation: try your limit of mindlessness

Experience zen meditation at the training dojo Dogyodo, where the movie "Last Samurai" was filmed. Quietly cross your legs and sit straight in a historical hall. You can spend valuable moments without worldly thoughts.



## Be a guard wearing full armor of a foot soldier

Stand in front of Otemon of the world heritage site, Himeji Castle, and welcome the tourists wearing the armor like a historical show.

**Open:** Every Sunday (from 9:00)  
**Fee:** Adults: ¥4,500 (armor made from paper), ¥5,500 (foot soldier armor or tatami armor, Elementary school students: ¥1,000 (armor made from paper)  
**Reservation & contact:**  
 Himeji Convention Support TEL 079-286-8988  
 (Open: Wednesday, Sundays, and holidays.)

## Popular among small children! Unique Ninja training experience.

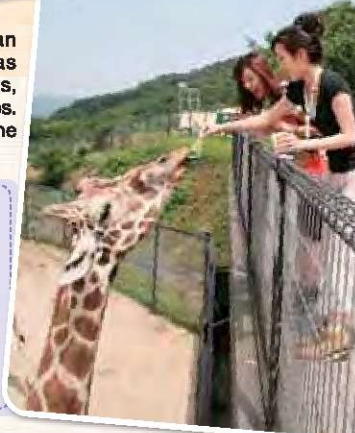
It is a great opportunity to get ninja training around Himeji Castle while wearing an authentic ninja costume.

**Open:** Every Sunday (from 12:30)  
**Fee:** ¥6,000 for adults, ¥3,000 for children  
**Reservation & contact:**  
 Himeji Convention Support  
 TEL 079-286-8988  
 (Open: Wednesday, Sundays, and holidays.)

## Feeding animals at Himeji Central Park

In the walking safari, you can feed various animals such as white lions, giraffes, elephants, bears, sheep, goats, and horses. It is a great chance to feed the animals instead of just looking.

**Open:** Every day (Closed on Wednesday)  
 \*It may be cancelled due to rain.  
**Fee:** From ¥200 (Admission fee is necessary)  
**Reservation & contact:**  
 Himeji Central Park  
 TEL 079-264-1811  
 \*Reservation can be made on that day. No walk ins.



## Change into an armed warrior by wearing the armor Himeji Castle

Explore the castle and Otemae area wearing heavy authentic full armor. Be a cool warrior.

**Open:** Every Sunday (from 12:30)  
**Fee:** ¥7,000 per hour / ¥10,000 per 3 hours  
**Reservation & contact:**  
 Himeji Convention Support  
 TEL 079-286-8988  
 (Open: Wednesday, Sundays, and holidays.)



## Sake brewery observation Enjoy delicious local sake

Sake brewery area is still in the same 3000 tsubo area. You can observe the sake brewing process in the wooden brewery that was used from the beginning until 1963. This course includes sampling of fresh sake.

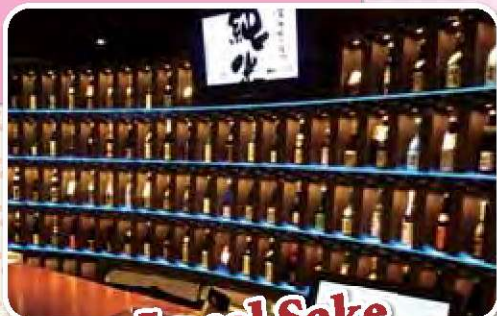


**Open:** All year around (from 10:00, 11:00, 14:00, 15:00, and 16:00)  
**Fee:** ¥100 (includes samples)  
**Reservation & contact:**  
 Nadagiku Shuzo  
 TEL 079-285-3111  
 \*Reservation can be made on that day. No walk ins.





# HIMEJI GOURMET



## Local Sake

There are eight sake breweries located in Himeji. Brewing has flourished in Himeji because this area has long been known for its excellent rice.



## Himeji Oden

Oden is a Japanese dish containing vegetables, eggs, meat and various ingredients cooked in a special broth. Himeji people eat oden in a unique way, with soy sauce and ginger.

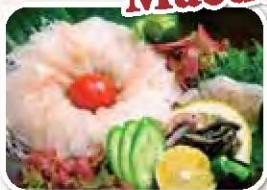


## A variety of local sweets

Try to taste various specialty sweets like "Karinto" (fried sweets), "Tamabaki", and "Gozasoro" (pancakes stuffed with sweet bean paste).



## Maedore



"Maedore" is a famous dish using an assortment of seasonal fresh fish. Himeji offers fresh delicacies from both the ocean and the mountains nearby.



# FOOD TOUR

## Kappatei

We serve the local delicacy, Himeji oden (hotchpotch)-based inexpensively a la carte, with homemade flavor relish of local brews, etc. Reasonable lunch sets are served during lunch time.



## Tacco Pire



The original Akashi style octopus dumpling shop. The typical eating style in Akashi is to put the sauce over the dumpling, dip it in the Japanese broth and eat.

## Gozasoro



Cheap and tasty dantan noodle and jumbo jiao-zi are served for only ¥550.



## Kobayashi Tea House

This tea house was started in 1875 and it is the most famous in Himeji. "Green ice cream with maccha" made in this store has been loved for a long time.



## Ninja Cafe (Jidai Cafe)

Ninja or Prince Sen welcomes you at this Japanese-style café. We serve humorous dishes such as Samurai lunch, Ninja parfait etc.



## Kitty café



A glasses company and Sanrio's Hellow Kitty collaborated for this café! There are many Kitty goods in the store.



## Menme



A sanuki noodle made by hand in the restaurant is extremely popular amongst foreign tourists.

## Tsujikawagonbe

The bowl of rice topped with sashimi, sushi set, and bowl of rice topped with conger are popular amongst guests.



## Omotenashi Dining Fukutei



We pride fresh sashimi, charcoal-grilled fish selected by our chef and rice cooked in an earthen pot.





# ACCOMMODATION & TAX FREE SHOPS

## Accommodation Info

### Hotels

HOTEL CROWN HILLS HIMEJI	079-222-8000
Grandvrio Hotel Himeji Castle	050-5847-7770
Himeji Green Hotel Sakamoto	079-289-0088
Himeji Green Hotel Tatemchi	079-288-2000
Hotel Livemax Himeji-Ekimae	079-282-4400
Hotel Nikko Himeji	079-222-2231
Hotel Himeji Plaza	079-281-9000
Apa Hotel (HIMEJIEKI-KITA)	079-284-4111
Hotel Claire Higasa	079-224-3421
Hotel Wing International	079-287-2111
Himeji City Hotel	079-298-0700
Via Inn Himeji	079-286-6111
Toyoko Inn Himeji-eki Shinkansen Minamiguchi	079-284-1045
Comfort Hotel Himeji	079-286-8511
Hotel Abest Himeji	079-283-5963
Hotel α-1 Himeji Minami-guchi	079-226-0005
Dormy Inn Himeji	079-286-5489
(Natural Hot Spring "Shirasagino-yu")	

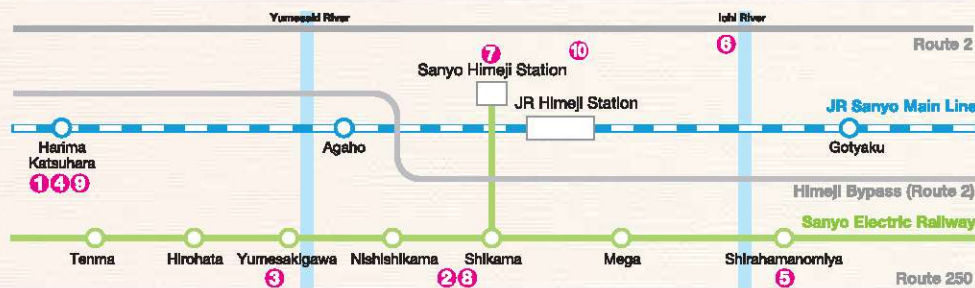
Hotel Sunshine Aoyama	079-276-1181
SETRE HIGHLAND VILLA HIMEJI	079-284-3010
Business Hotel Sakigake Honkan	079-236-4774
Chisan Inn Himeji Yumesakibashi	079-267-7511
Hotel Aston Plaza Himeji	079-243-1500
Engyoji Kaikan	079-266-3240
Hoshinoko Yakata (Children's House)	079-267-3050
Hotel Himeji Hills	079-299-8689
<b>Shiota Hot Spring Resort</b>	
Ueyama Ryokan	079-336-0020
Yumenoi	079-336-1000
New Sunpia Himaji Yumesaki	079-335-5551
<b>Ieshima Islands</b>	
Island House Ieshimaso	079-325-2882
<b>Kodera &amp; Yasutomi</b>	
Himeji-shi Kyuyo Center	079-232-7788
Koderaso	
Yasutomi Greenstation	0790-66-3505
Shikagatsubo	

### Guest House

Himeji 588 Guesthouse	Himeji Guest House Engakudou
070-5665-5888	090-9717-6763

## Tax Free Shops Info

1 AEON HIMEJI-OOTSU	6711146, Ootsu-cho 2-5, Ootsu-ku, Himeji	Department stores & Supermarkets
2 AEON HIMEJI-RIVERCITY	6728064, Hosoe 520, Shikama-ku, Himeji	Department stores & Supermarkets
3 ITO YOKADO HIROHATA TEN	6711122, 1-1 Yumesakidcho Hirohata-ku Himeji	Department stores & Supermarkets
4 Joshin Denki Himeji-Ootsu Aeon Mall	6711146, Ootsu-cho 2-5, Ootsu-ku, Himeji	Electronics, Toys, Dolls & Folk crafts
5 MEGA Don Quijote Himeji Shirahama Store	6728023, Shirahama-cho, Himeji	Etc.
6 Don Quijote Himeji RIOS Store	6700821, Togo-cho, Himeji	Etc.
7 SANYO DEPARTMENT STORE	6700912, 1 Minamimachi, Himeji	Department stores & Supermarkets
8 SPORTS AUTHORITY HIMEJI-RIVERCITY	6728064, 2614 Hosoe, Shikama-ku, Himeji	Sports & Outdoors
9 SPORTS AUTHORITY HIMEJI-OTSU	6711146, 2-5 Otsu-cho, Otsu-ku, Himeji	Sports & Outdoors
10 Yamatoyashiki DEPARTMENT STORE	6708555, 55 Nikaimachi Himeji	Department stores & Supermarkets



## Himeji city tourist information center (Himeji Kanko Navi Port)

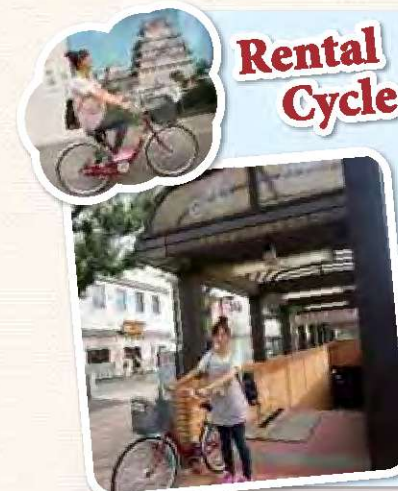
A tourist information center is located on the west side of the central concourse in Himeji Station. They handle bicycle rentals and wheelchair rentals (for free) as well as providing tourist information and hotel information. There is always a staff member who can speak English. You can use free Wifi and charging devices for cellphones and cameras are available (with fee).

**Phone:** 079-287-0003

**Hours:** 9:00 to 19:00

**Closed:** December 29th, 30th, and facility inspection day

**Location:** West side of central concourse in Himeji Station



## Rental Cycle

Bicycle rental is free and is very convenient for exploring around Himeji Castle.

**Location:** Himeji city tourist information center (west side of JR Himeji station central concourse)

**Time:** 9:00 to 16:00

(Return time is different depending on the location)

**Fee:** Free (You must fill out an application form)

**How to use:**

You will receive a number card when you fill out the application form at the counter at Himeji city tourist information center. Take the number card to the rental area and give it to the person in charge.

**Return time:**

Return time for Otemae bicycle parking is until 17:30.

**Others:** You cannot make reservation

**Contact:** Himeji city tourist information center  
TEL 079-287-0003

The loop bus runs around the Himeji Castle. It is very reasonably priced with ¥100 for adult and ¥50 for kids! The retro style bus will take you around Himeji!

**Open:** Every day (It runs only on Saturdays, Sundays, and holidays from December to February.)

**Hours:** From 9:00 a.m. (First bus) to 5:00 p.m. (last bus). 20 minutes per loop, 16 loops per day (27 loops for Saturdays, Sundays, and holidays)

**Fee:** Toll: ¥100 for adults, and ¥50 for children (6 years to 6th grader)



## Sightseeing loop bus